

Mount Pleasant Library Report

EXHIBIT: 3

NDA Sketches of Alternatives

NDA has produced four potential ramp alternatives with access at the front of the library building.

Accessible Ramp Alternatives:

i) *Sketch #1: Universal Entry*

The proposal design consists of locating a new three-way ramp outside the front library to right side of the stairs. The rough stone paver on the ramp is linked to a new sandstone wall with stainless steel hand rail on both two sides each way. This will equalize entry for all library users at the top of the grand staircase.

ii) *Sketch #2: Upgrade the Current Accessibility Ramp*

The current accessibility ramp at the front of the library leads users through a secondary entrance at the lower-level, where an existing elevator is located next to the vestibule area. This ramp complies with key ADA Standards and ADAAG, but there would need to be minor technical refinements (Handrails set to the same height; Handrail grip less wide; Door partition reduced to only 1/4" high) to make it fully compliant. It also can be upgraded in terms of approach style and architectural elements which could make it much more welcoming. For example, NDA suggests shortening the ramp to 30 feet long making the trip into the library even faster.

iii) *Sketch #3: Upgrade the Current Accessibility Ramp + Porch Lift*

Upgrade the current accessibility ramp and add the porch lift to provide Universal Access to the main door at the top of the grand stairs. This provides the best of both options and still allows mothers easy stroller access into the lower-level.

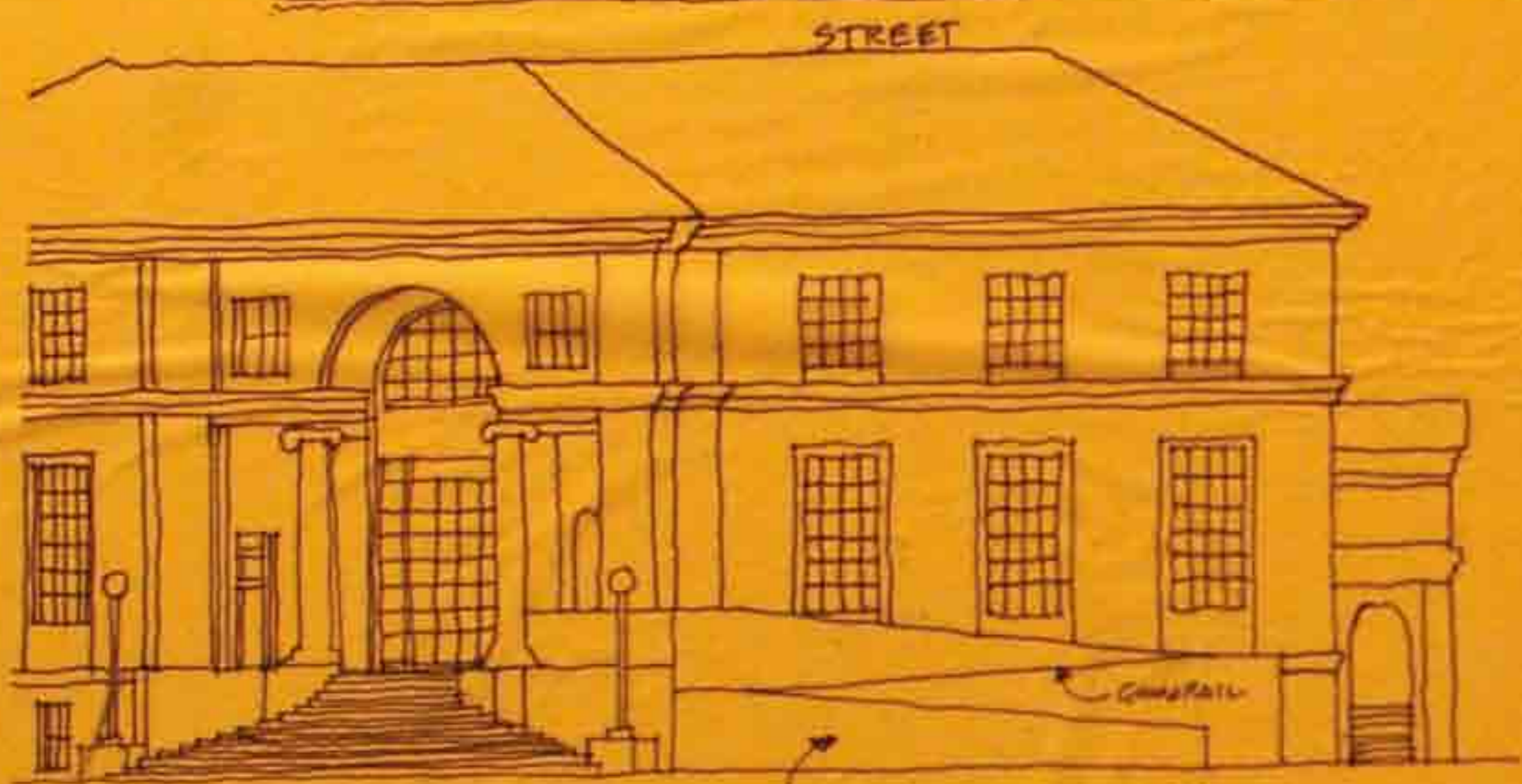
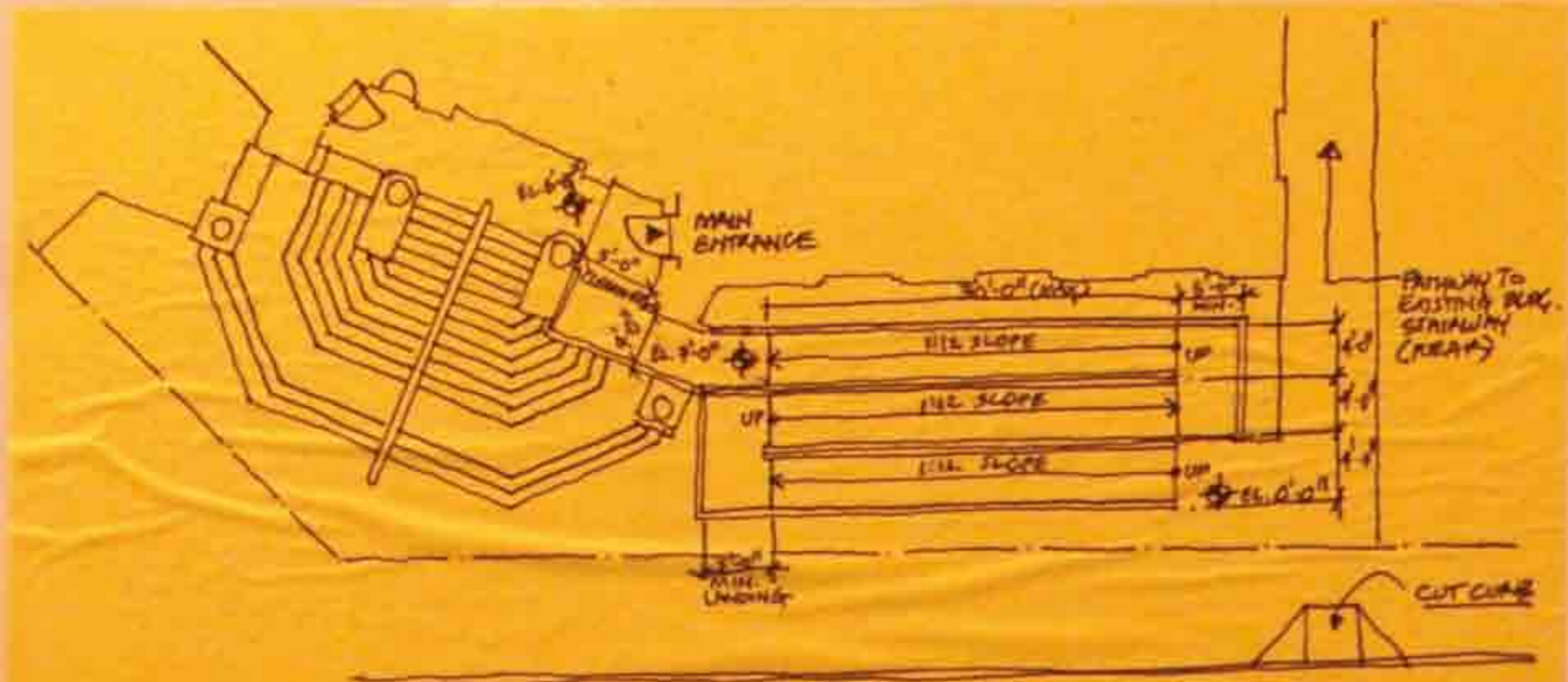
iv) *Sketch #4: Universal Entry + Porch Lift*

In addition to the new three-way ramp on the accessible route, a porch lift may be installed to help library users with disabilities the haste they may need to access the library due to inclement weather. The lift would also take users to the top of the grand stairs.

This option allows users to still enter the front of the building in a safe and welcoming way, just next to the grand stairs where able-bodied library patrons and residents with disabilities can see each other and thus helps address Universal Guidelines with regard to experience integration.

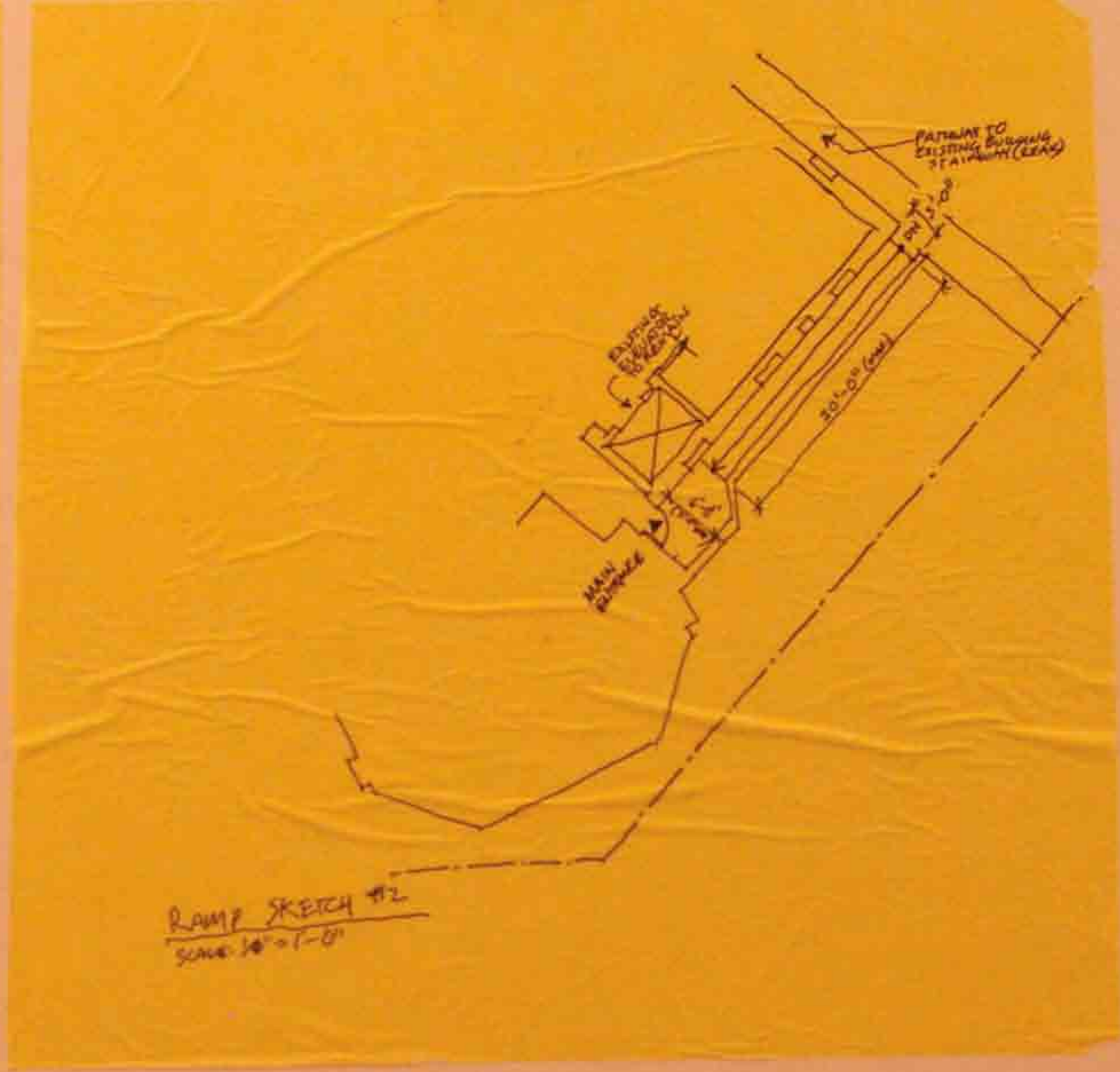
ArchiCAD rendering

We have also provided an ArchiCAD file, showing sketches 1, 3, & 4 rendered by computer.

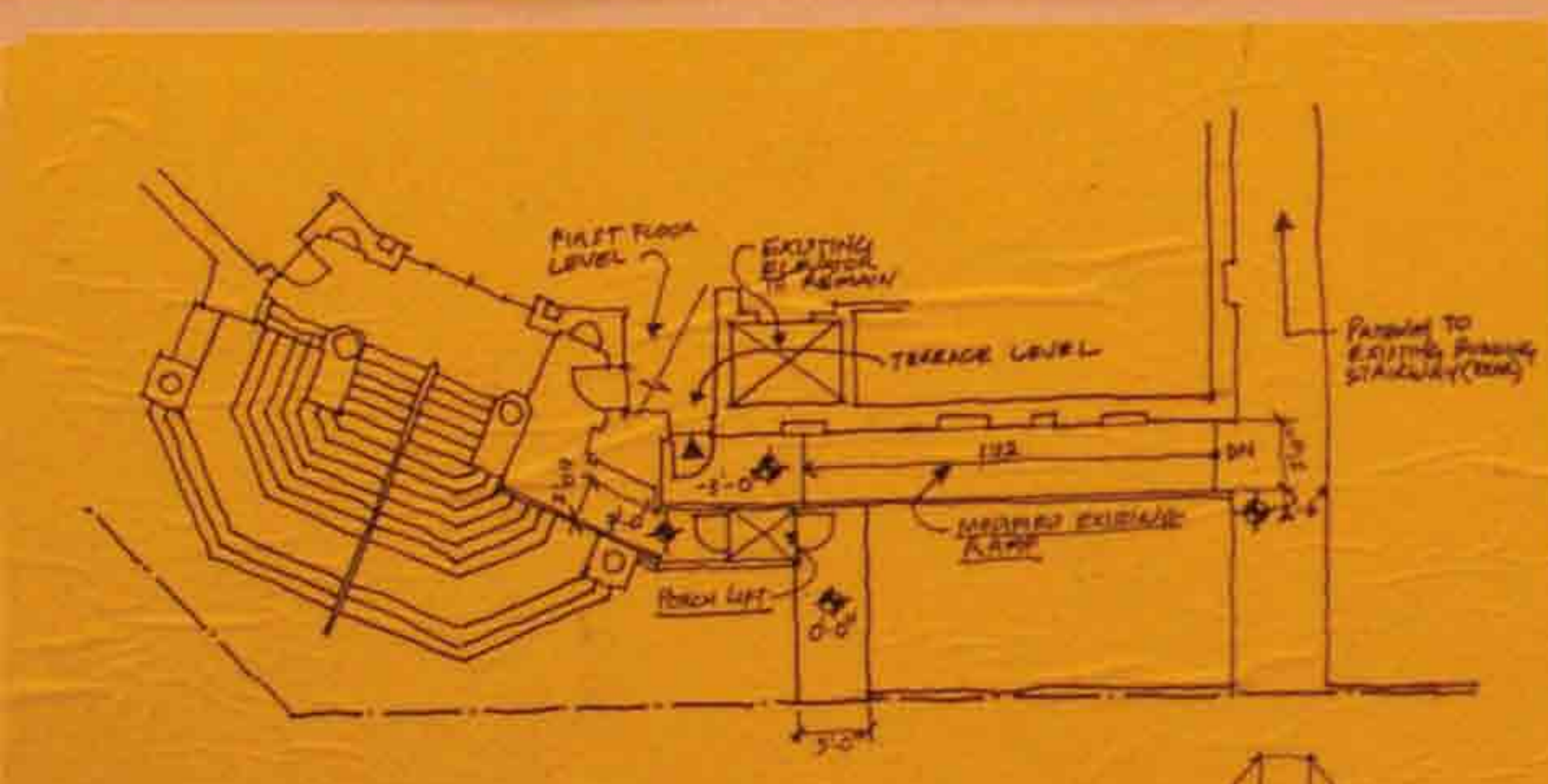


SKETCH #1 - RAMP
SCALE: 3/8" = 1'-0"

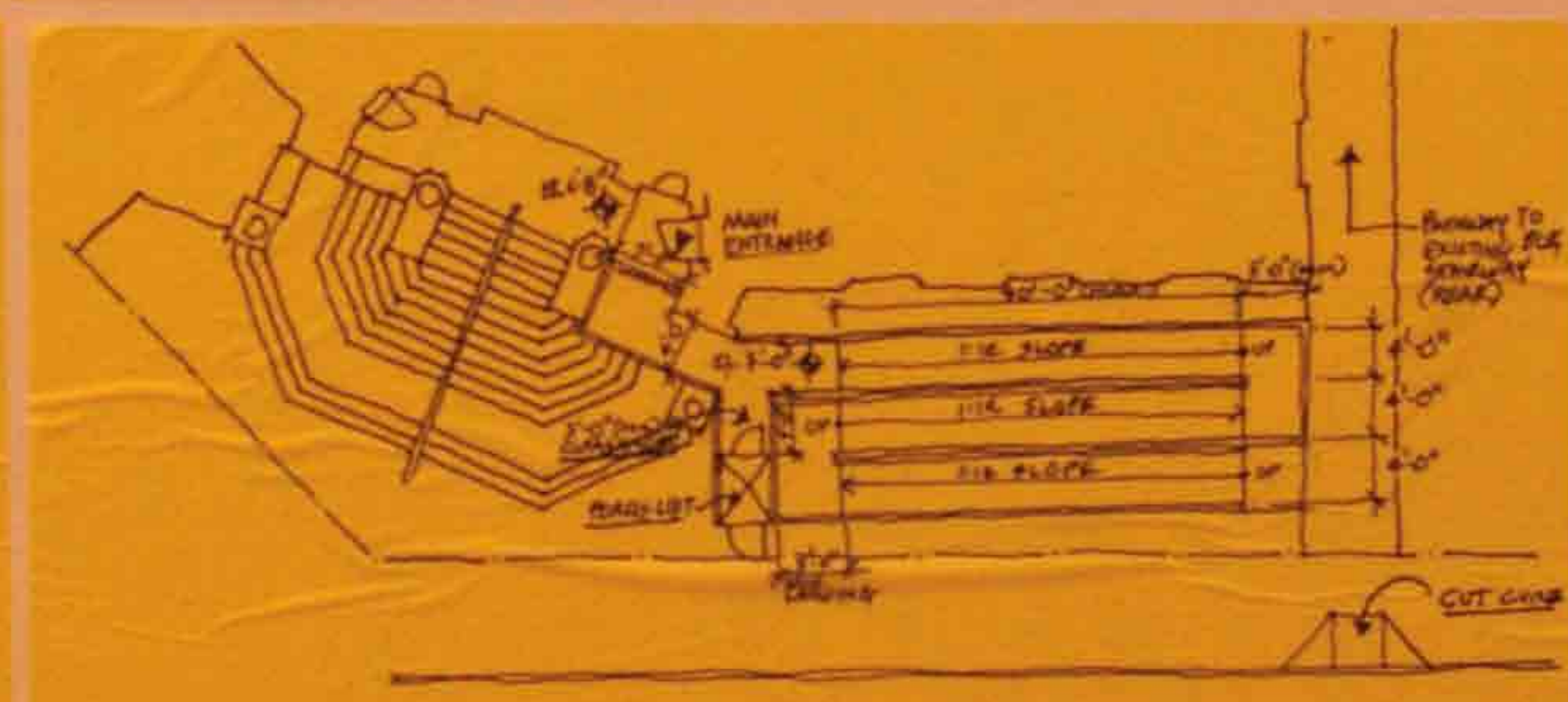
NEW 'LINESHINE' RAMP WALL TO MATCH EXISTING WALL



RAMP SKETCH #2
SCALE: 3/8" = 1'-0"

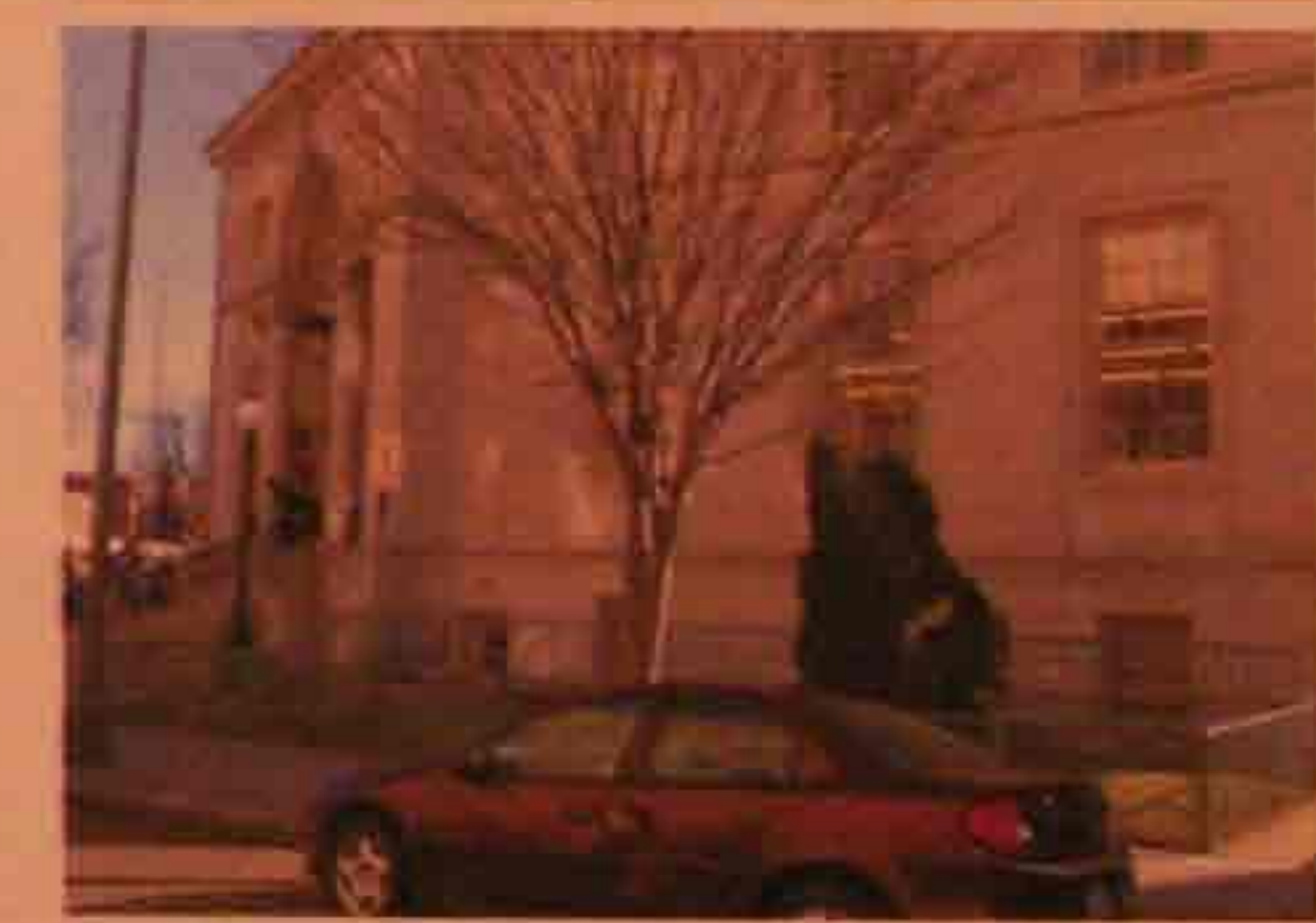


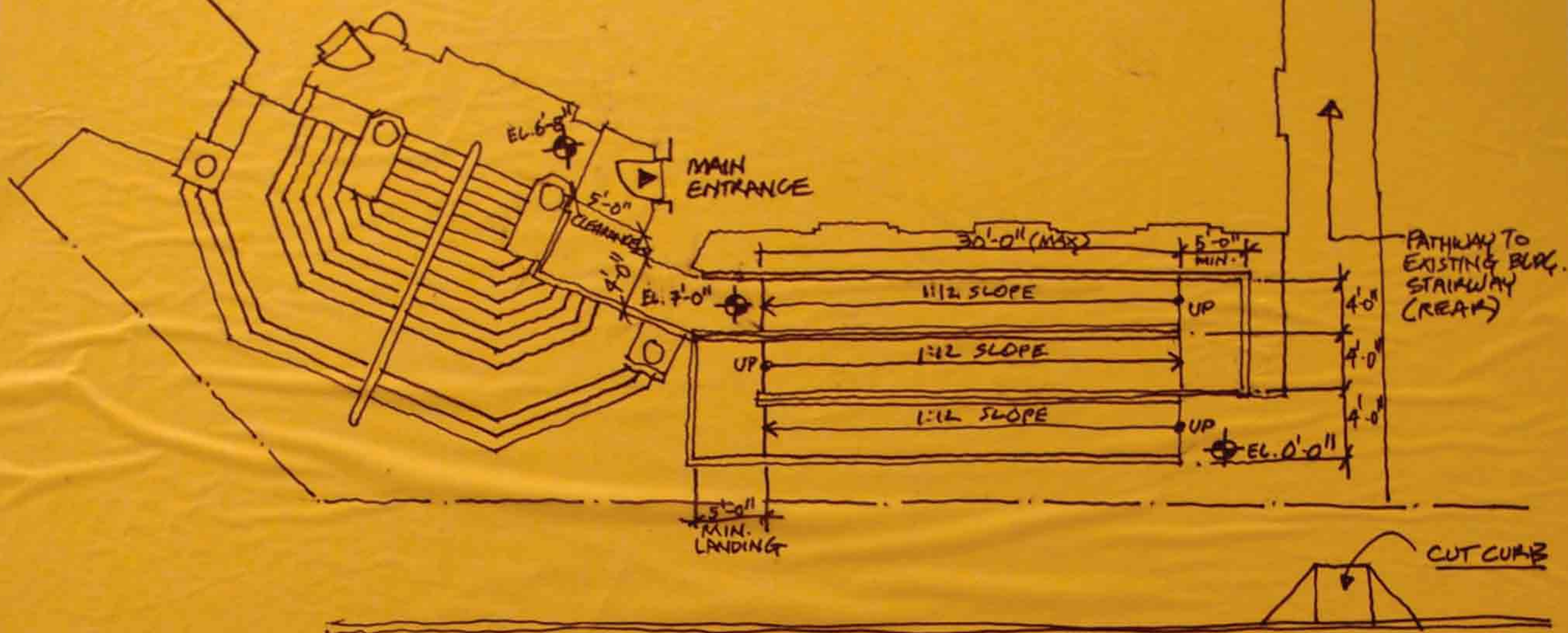
SKETCH #3 - RAMP/PORCH LIFT
SCALE: 3/8" = 1'-0"



SKETCH #4 - NEW RAMP/PORCH LIFT
SCALE: 3/8" = 1'-0"

NEW 'LINESHINE' RAMP WALL TO MATCH EXISTING WALL

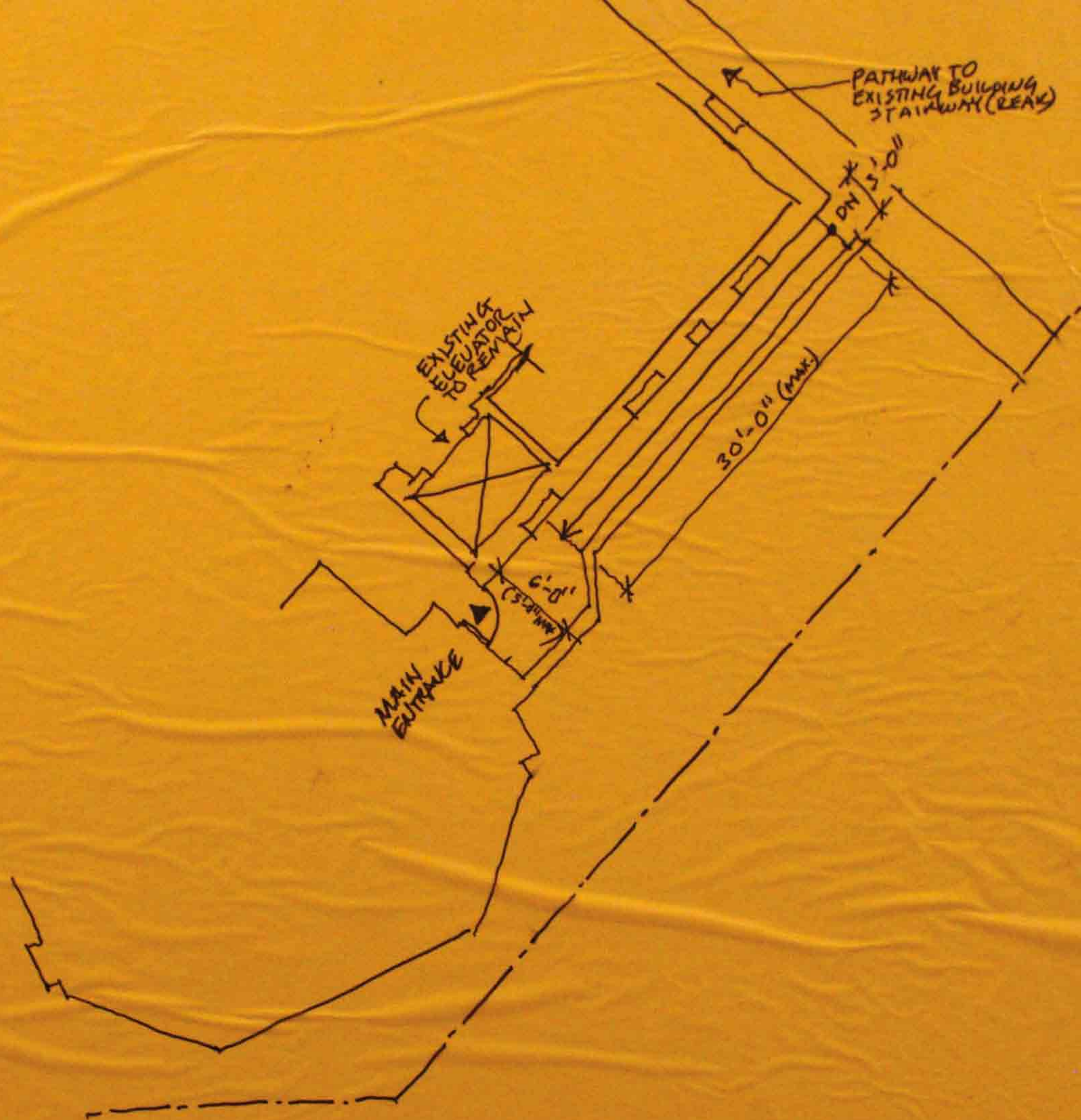




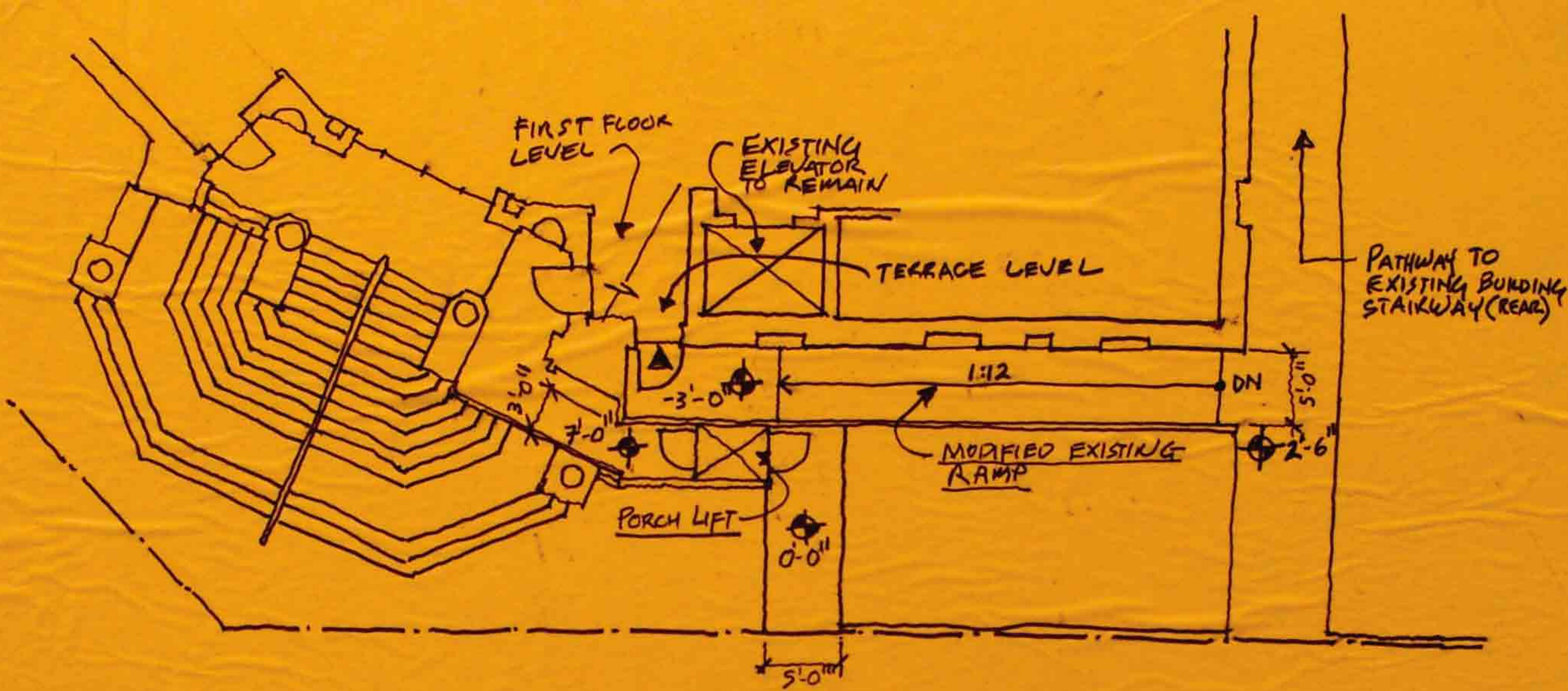
SKETCH #1 - RAMP

SCALE: 1/8" = 1'-0"

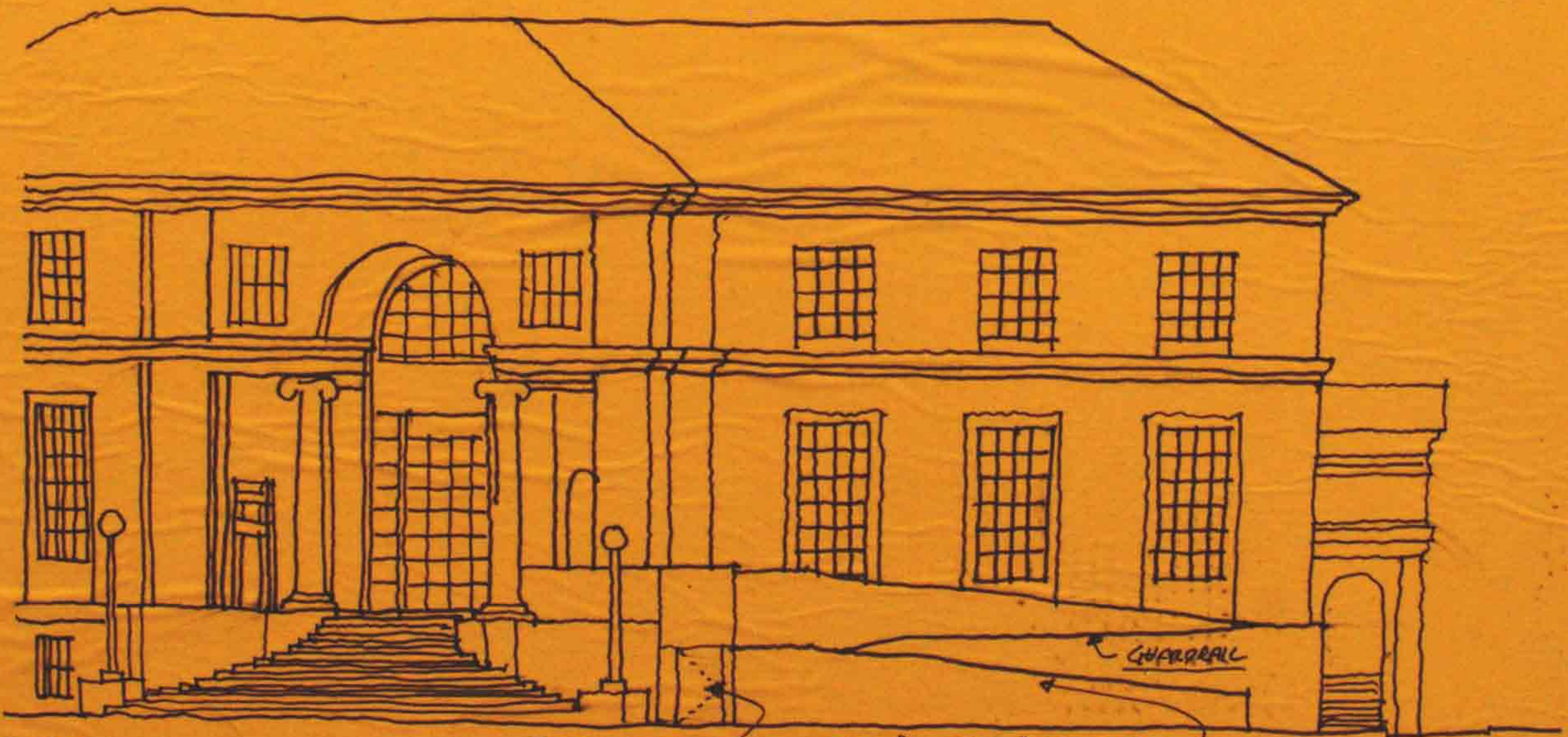
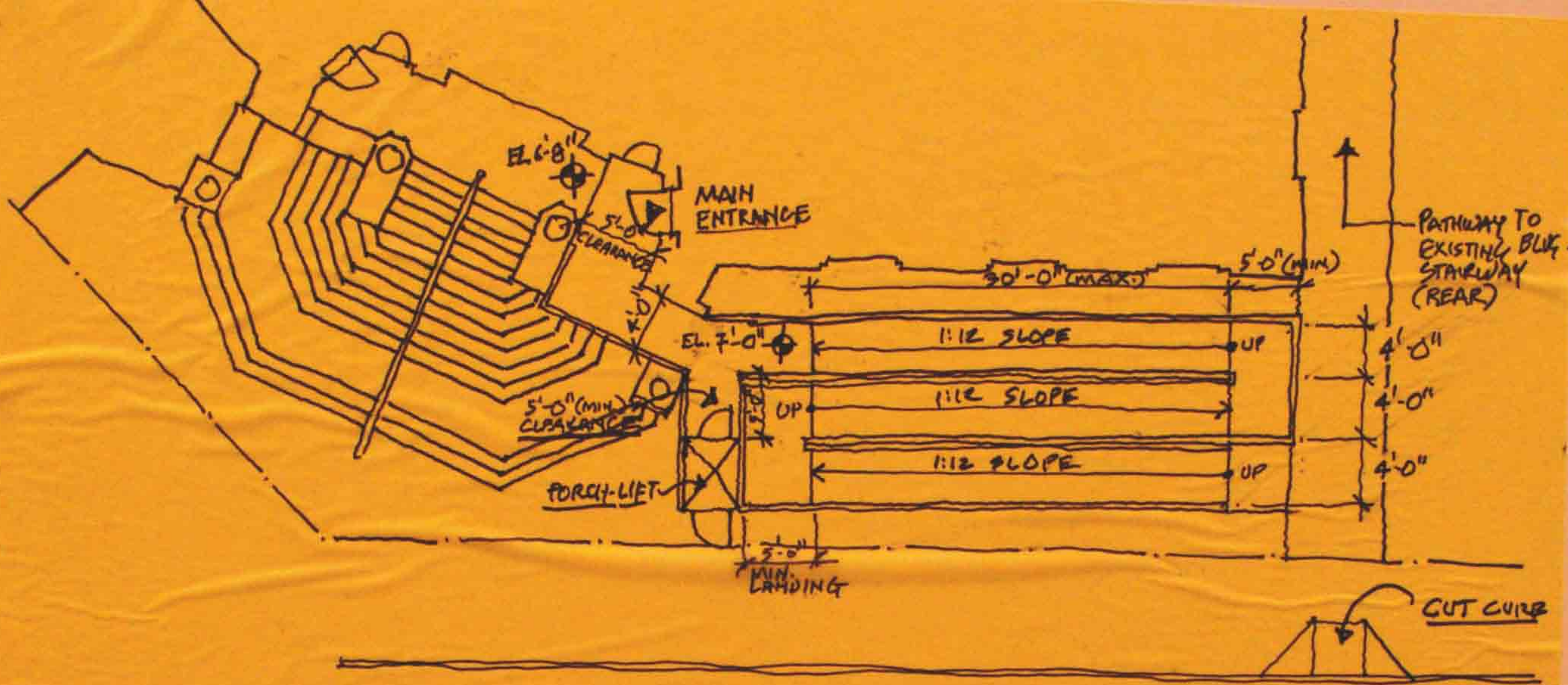
NEW "LIMESTONE" RAMP WALL TO MATCH EXISTING WALL



RAMP SKETCH #2
SCALE: 1/8" = 1'-0"



SKETCH #3 - RAMP/PORCH LIFT
SCALE: 1/8" = 1'-0"



SKETCH # 7 - NEW RAMP / PORCH-LIFT
 SCALE: $\frac{1}{8}'' = 1'-0''$

PORCH-LIFT

NEW "LIMESTONE" RAMP WALL
 TO MATCH EXISTING WALL

