

Mount Pleasant Library Report

**EXHIBIT: 2**

**Ramp Runs, Elevations, and Cross-Slope Measurements**

Written measurements showing rise and run of DCPL's proposed accessibility ramp using DCPL's A1.02 Construction Document.

- (a) Slope and Rise Measurements
- (b) Cross-Slope Measurements

# RAMP RUNS & ELEVATIONS

**Mt. Pleasant Library**  
 1100 18th Street, NW  
 Washington, DC 20036

**ARCHITECT**  
 1100 18th Street, NW  
 Washington, DC 20036

**STRUCTURAL ENGINEER**  
 1100 18th Street, NW  
 Washington, DC 20036

**MECHANICAL ENGINEER**  
 1100 18th Street, NW  
 Washington, DC 20036

**ELECTRICAL ENGINEER**  
 1100 18th Street, NW  
 Washington, DC 20036

**PLUMBING ENGINEER**  
 1100 18th Street, NW  
 Washington, DC 20036

**CONCRETE ENGINEER**  
 1100 18th Street, NW  
 Washington, DC 20036

**WOODWORK ENGINEER**  
 1100 18th Street, NW  
 Washington, DC 20036

**GLASS ENGINEER**  
 1100 18th Street, NW  
 Washington, DC 20036

**STEEL ENGINEER**  
 1100 18th Street, NW  
 Washington, DC 20036

**MECHANICAL ENGINEER**  
 1100 18th Street, NW  
 Washington, DC 20036

**ELECTRICAL ENGINEER**  
 1100 18th Street, NW  
 Washington, DC 20036

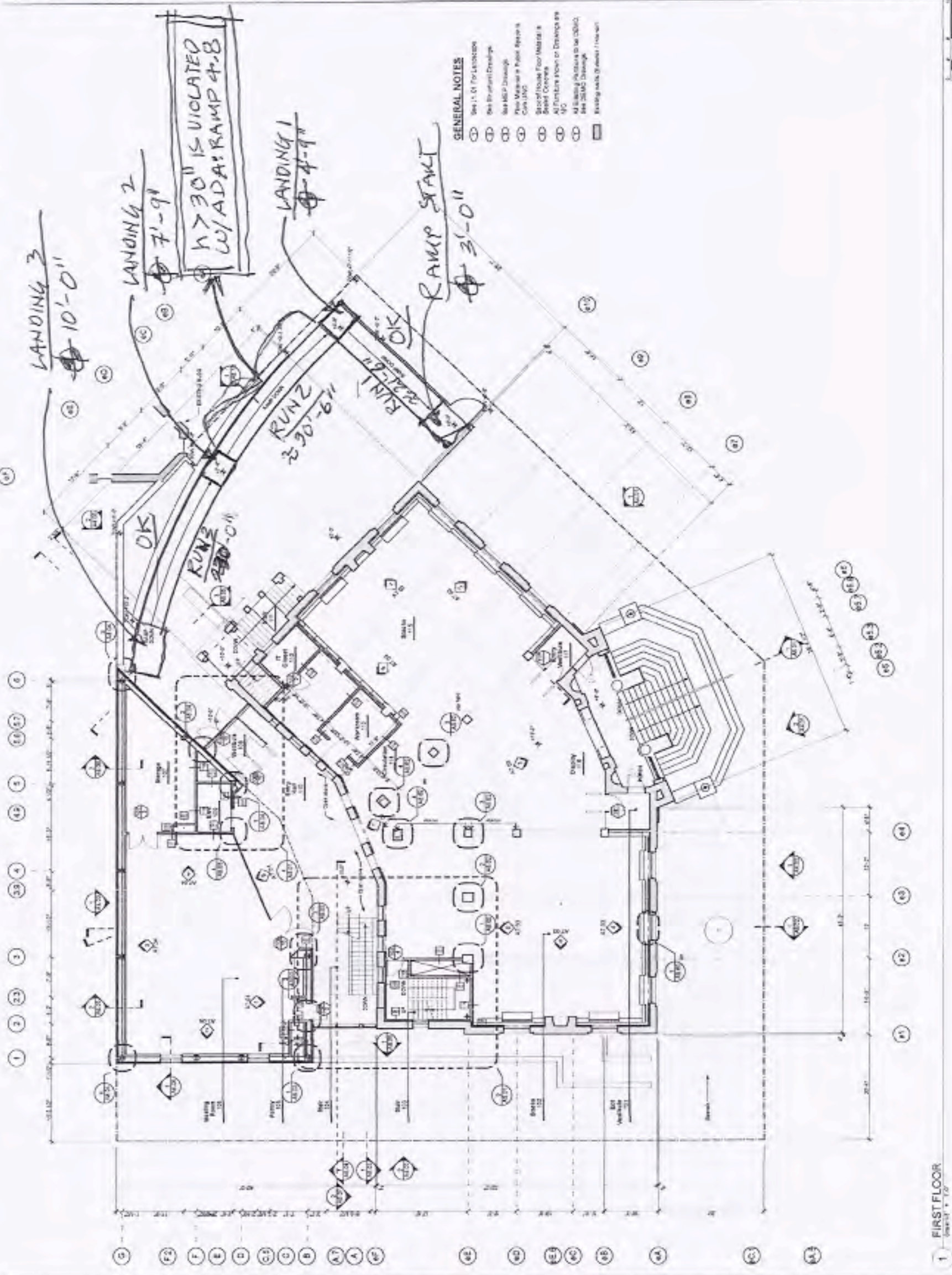
**PLUMBING ENGINEER**  
 1100 18th Street, NW  
 Washington, DC 20036

**CONCRETE ENGINEER**  
 1100 18th Street, NW  
 Washington, DC 20036

**WOODWORK ENGINEER**  
 1100 18th Street, NW  
 Washington, DC 20036

**GLASS ENGINEER**  
 1100 18th Street, NW  
 Washington, DC 20036

**STEEL ENGINEER**  
 1100 18th Street, NW  
 Washington, DC 20036



- GENERAL NOTES**
- 1. See 1.01 For Location
  - 2. See Structural Drawings
  - 3. See MEP Drawings
  - 4. See Mechanical & Plumbing Approvals
  - 5. See Structural & Steel Details
  - 6. See Structural & Steel Details
  - 7. See Structural & Steel Details
  - 8. See Structural & Steel Details
  - 9. See Structural & Steel Details
  - 10. See Structural & Steel Details
  - 11. See Structural & Steel Details
  - 12. See Structural & Steel Details

**FIRST FLOOR**  
**A1.02**  
 0 of 10 pages

**FIRST FLOOR**  
 Sheet A1.02



