

1 ARCH FLOOR PLAN-LOWER LEVEL
 A.3.0.0 Scale: 3/16" = 1'-0"

ALL RIGHTS RESERVED. NO PART OF THIS DOCUMENT MAY BE REPRODUCED OR TRANSMITTED IN ANY FORM OR BY ANY MEANS, ELECTRONIC OR MECHANICAL, WITHOUT THE WRITTEN PERMISSION OF THE ARCHITECT.

DRAWINGS, DESIGN AND SPECIFICATIONS ARE © 2014 NORMAN SMITH ARCHITECTURE
 ELECTRONIC FILE(S) DISCLAIMER:
 THESE FILES PROVIDED DIRECTLY BY NORMAN SMITH ARCHITECTURE (NSA) OR BY DIGITAL SCANNING OF PAPER COPIES ARE © NSA UNLESS THE FILES ARE THE INTELLECTUAL PROPERTY OF A NON-NSA ENTITY. THE FILES MAY NOT BE MANIPULATED, REVISED OR MODIFIED IN ANY MANNER WITHOUT THE PRIOR WRITTEN CONSENT OF THE ARCHITECT.

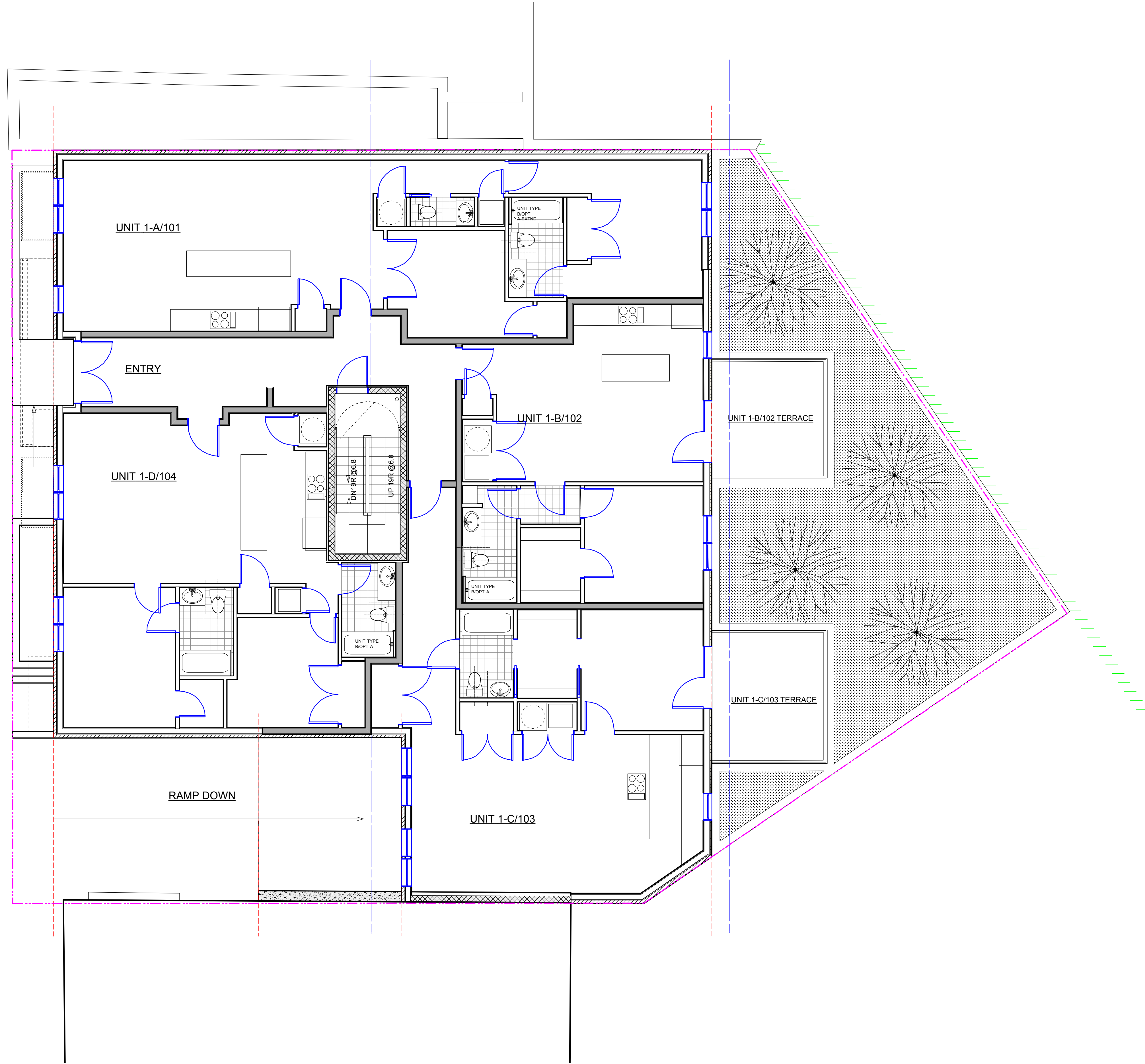
CCRE REVW+ANC
 PRESENT:082214

Norman Smith Architecture
 1341 H Street, NW, Washington, DC
 20002-4406

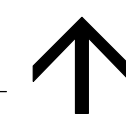
Multi-Family Residential Project at
 2341 Ontario Road, NW

Capital City Real Estate

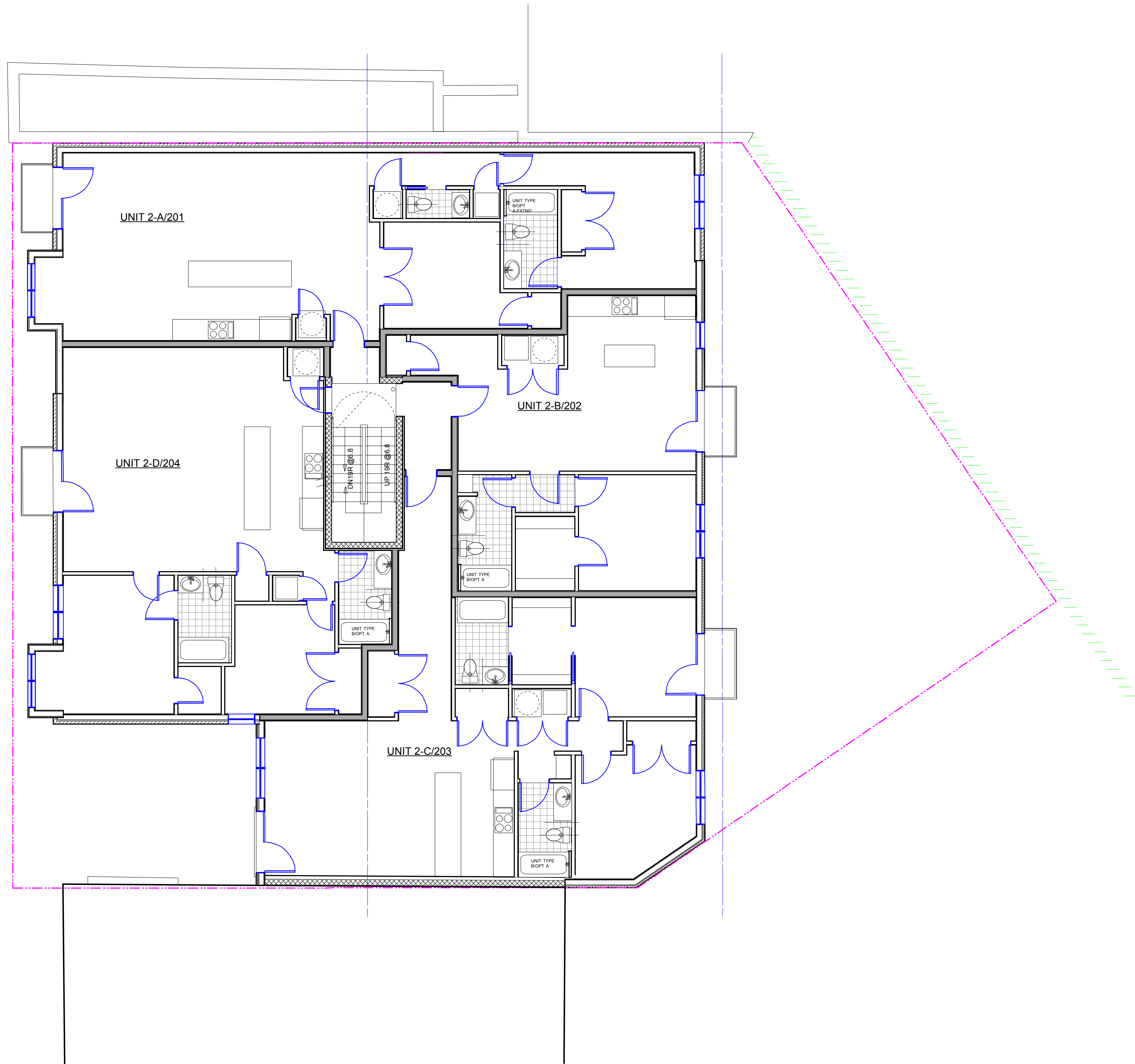
A.3.0.0



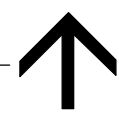
1 ARCH FLOOR PLAN-GROUND LEVEL
 A.3.0.1 Scale: 3/16" = 1'-0"



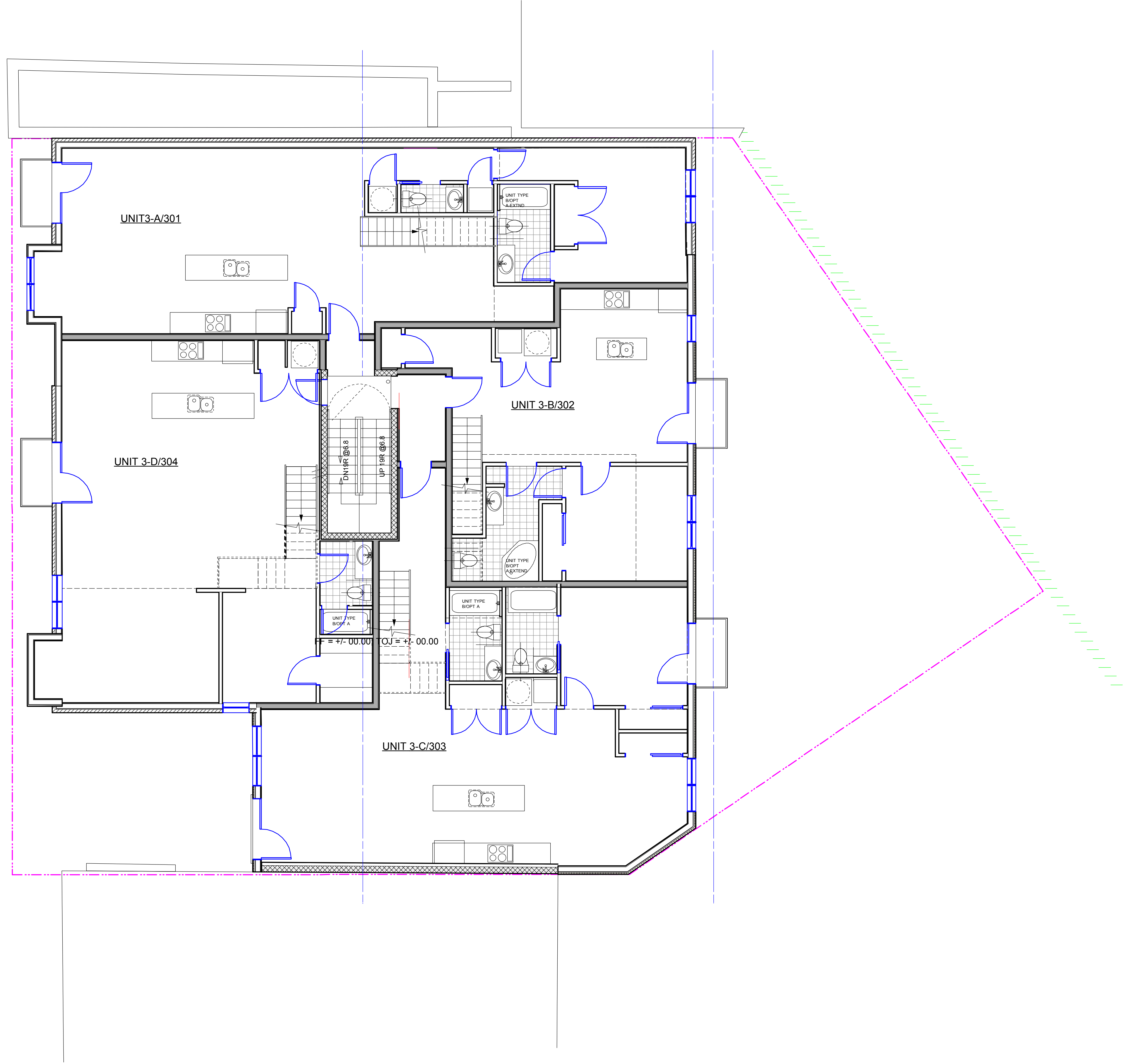
ELECTRONIC FILE(S) DISCLAIMER:
 THESE FILES PROVIDED DIRECTLY BY NORMAN SMITH ARCHITECTURE (NSA) OR BY DIGITAL SCANNING OF PAPER COPIES ARE © NSA UNLESS THE FILES ARE THE INTELLECTUAL PROPERTY OF A NON-NSA ENTITY. THE FILES MAY NOT BE MANIPULATED, REVISED OR MODIFIED IN ANY MANNER WITHOUT THE PRIOR WRITTEN CONSENT OF THE ARCHITECT.



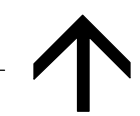
1 ARCH FLOOR PLAN-RESIDENTIAL LEVEL-2
 A.3.0.2 Scale: 3/16" = 1'-0"



ELECTRONIC FILE(S) DISCLAIMER:
 THESE FILES PROVIDED DIRECTLY BY NORMAN SMITH ARCHITECTURE (NSA) OR BY DIGITAL SCANNING OF PAPER COPIES ARE © NSA UNLESS THE FILES ARE THE INTELLECTUAL PROPERTY OF A NON-NSA ENTITY. THE FILES MAY NOT BE MANIPULATED, REVISED OR MODIFIED IN ANY MANNER WITHOUT THE PRIOR WRITTEN CONSENT OF THE ARCHITECT.



1 ARCH FLOOR PLAN-RESIDENTIAL LEVEL-3
 A.3.0.3 Scale: 3/16" = 1'-0"



E-FILES PROVIDED DIRECTLY BY NORMAN SMITH ARCHITECTURE (NSA) OR BY DIGITAL SCANNING OF PAPER COPIES ARE © NSA UNLESS THE FILES ARE THE INTELLECTUAL PROPERTY OF A NON-NSA ENTITY. THE FILES MAY NOT BE MANIPULATED, REVISED OR MODIFIED IN ANY MANNER WITHOUT THE PRIOR WRITTEN CONSENT OF THE ARCHITECT.

DRAWINGS, DESIGN AND SPECIFICATIONS ARE © 2014 NORMAN SMITH ARCHITECTURE
 ELECTRONIC FILE(S) DISCLAIMER:
 FILES PROVIDED DIRECTLY BY NORMAN SMITH ARCHITECTURE (NSA) OR BY DIGITAL SCANNING OF PAPER COPIES ARE © NSA UNLESS THE FILES ARE THE INTELLECTUAL PROPERTY OF A NON-NSA ENTITY. THE FILES MAY NOT BE MANIPULATED, REVISED OR MODIFIED IN ANY MANNER WITHOUT THE PRIOR WRITTEN CONSENT OF THE ARCHITECT.

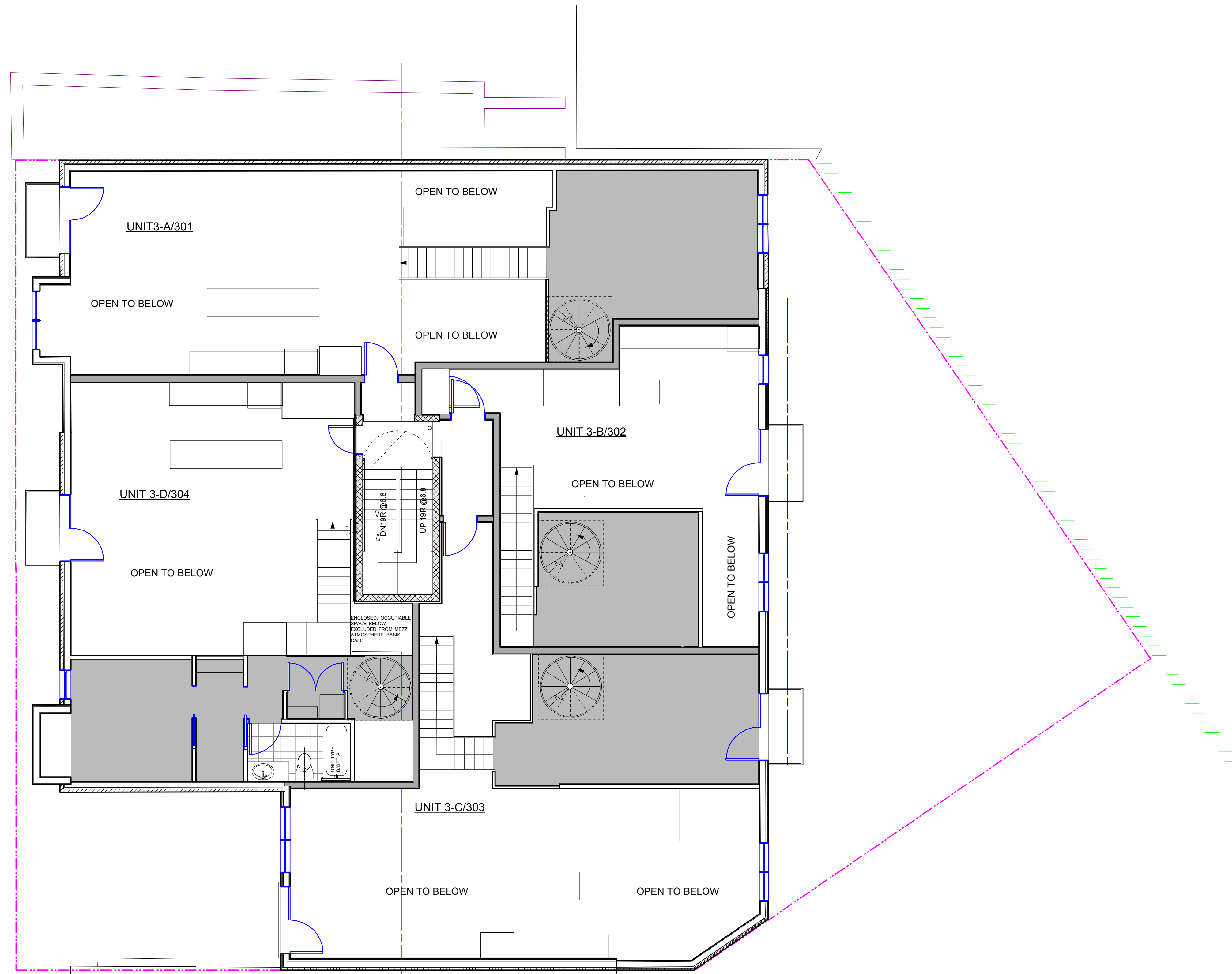
CCRE REVW+ANC
 PRESENT:082214

Norman Smith Architecture
 1341 H Street, NW, Washington, DC
 20002-4406

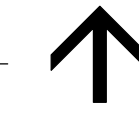
Multi-Family Residential Project at
 2341 Ontario Road, NW

Capital City Real Estate

A.3.0.3



1 ARCH FLOOR PLAN-MEZZANINE LEVEL
 A.3.0.4 Scale: 3/16" = 1'-0"



ALL DIMENSIONS UNLESS OTHERWISE NOTED
 ALL FINISHES TO BE DETERMINED BY THE ARCHITECT

DRAWINGS, DESIGN AND SPECIFICATIONS ARE © 2014 NORMAN SMITH ARCHITECTURE
 ELECTRONIC FILE(S) DISCLAIMER:
 THESE FILES PROVIDED DIRECTLY BY NORMAN SMITH ARCHITECTURE (NSA) OR BY DIGITAL SCANNING OF PAPER COPIES ARE © NSA UNLESS THE FILES ARE THE INTELLECTUAL PROPERTY OF A NON-NSA ENTITY. THE FILES MAY NOT BE MANIPULATED, REVISED OR MODIFIED IN ANY MANNER WITHOUT THE PRIOR WRITTEN CONSENT OF THE ARCHITECT.

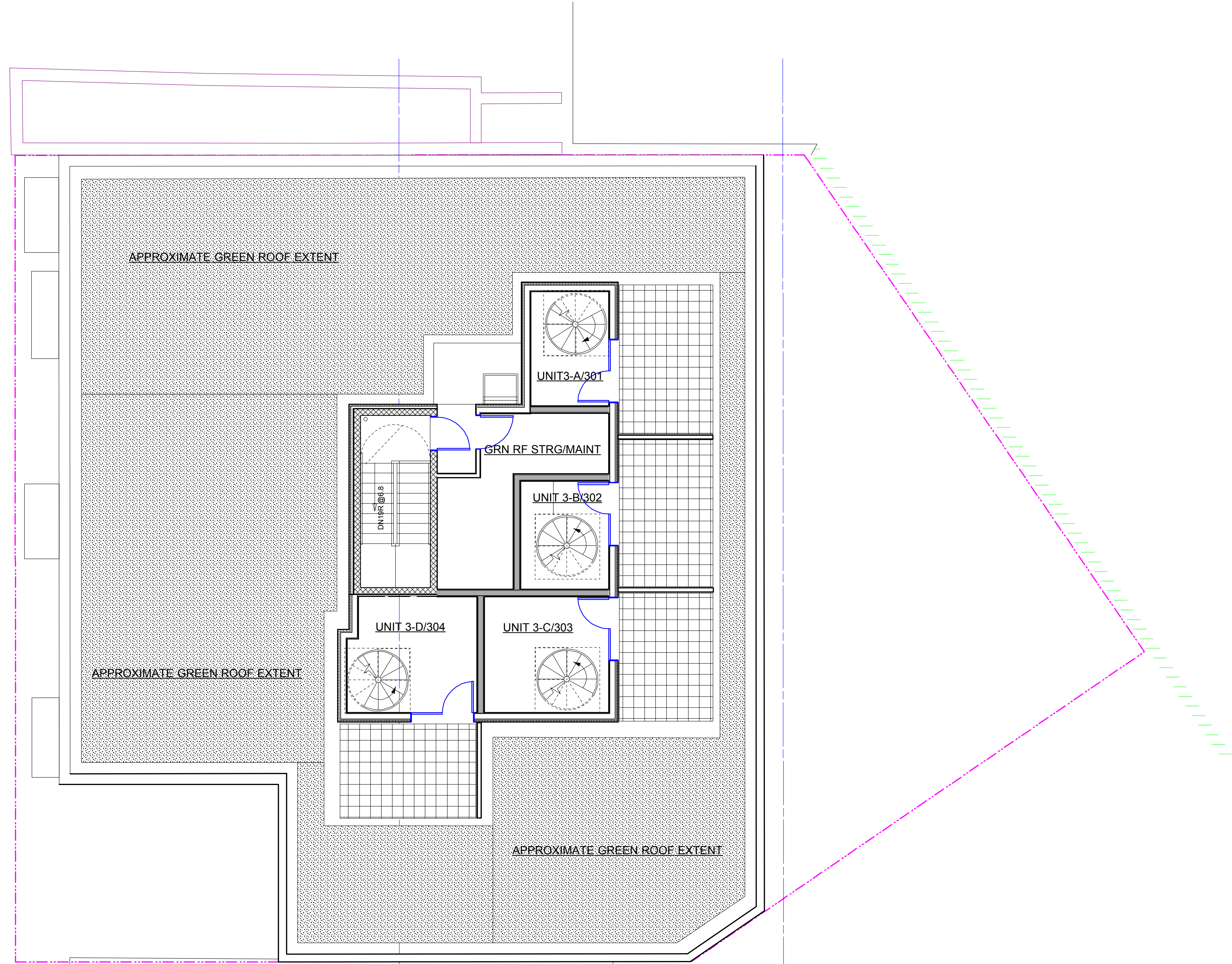
CCRE REVW+ANC
 PRESENT:082214

Norman Smith Architecture
 1341 H Street, NW, Washington, DC
 20002-4406

Multi-Family Residential Project at
 2341 Ontario Road, NW

Capital City Real Estate

A.3.0.4

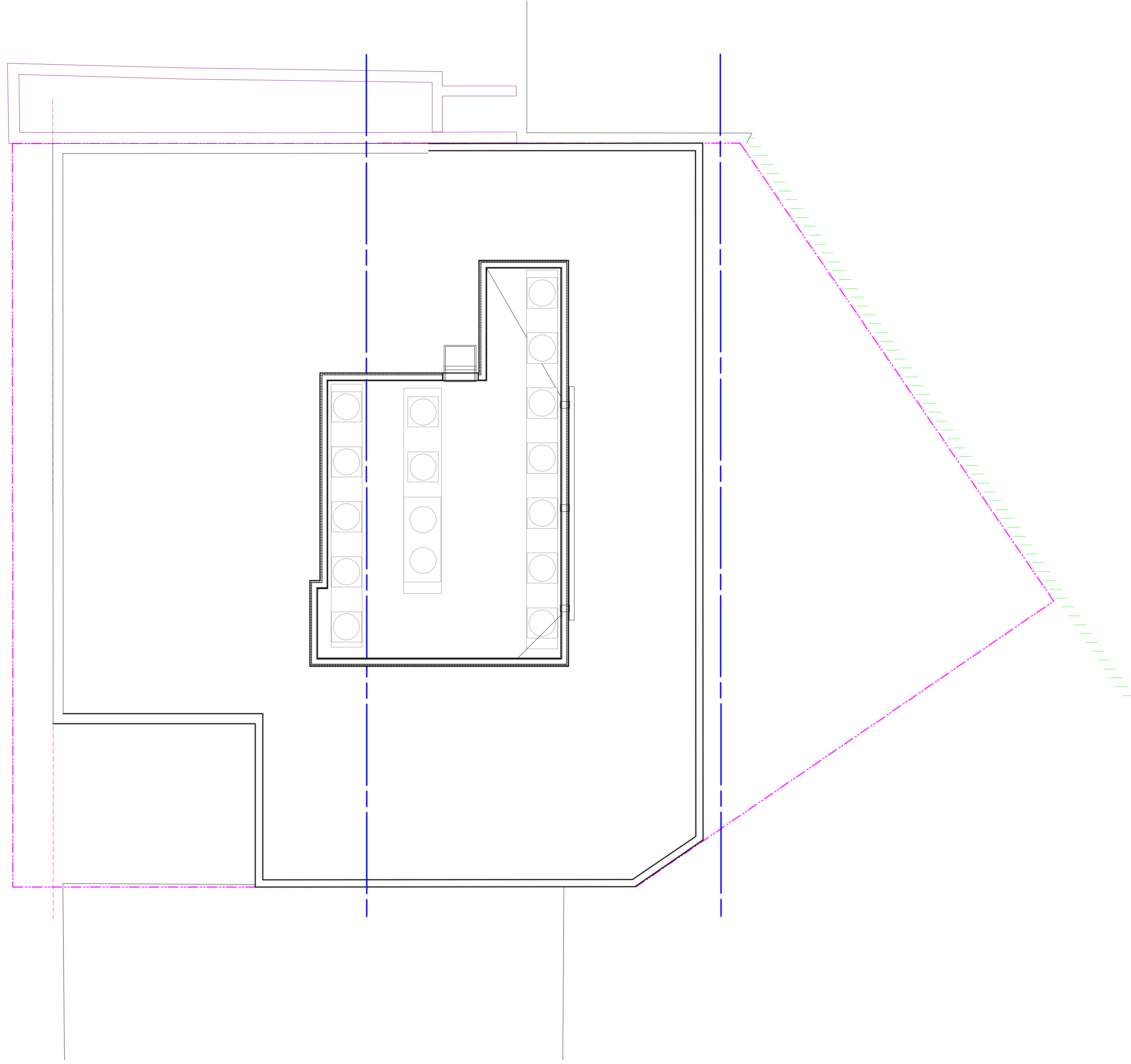


1 ARCH FLOOR PLAN-ROOF STRUCTURE+MAIN ROOF LEVEL
 A.3.1.0 Scale: 3/16" = 1'-0"

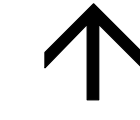


ALL INFORMATION CONTAINED HEREIN IS UNCLASSIFIED EXCEPT WHERE SHOWN OTHERWISE. IT IS THE PROPERTY OF THE ARCHITECT AND IS TO BE USED ONLY FOR THE PROJECT AND SITE SPECIFICALLY IDENTIFIED. IT IS NOT TO BE REPRODUCED, COPIED, OR TRANSMITTED IN ANY FORM OR BY ANY MEANS, ELECTRONIC OR MECHANICAL, INCLUDING PHOTOCOPYING, RECORDING, OR BY ANY INFORMATION STORAGE AND RETRIEVAL SYSTEM, WITHOUT THE PRIOR WRITTEN CONSENT OF THE ARCHITECT.

A.3.1.0	Capital City Real Estate	Multi-Family Residential Project at 2341 Ontario Road, NW	Norman Smith Architecture 1341 H Street, NW, Washington, DC 20002-4406	CCRE REVW+ANC PRESENT:082214	DRAWINGS, DESIGN AND SPECIFICATIONS ARE © 2014 NORMAN SMITH ARCHITECTURE ELECTRONIC FILE(S) DISCLAIMER: THESE FILES PROVIDED DIRECTLY BY NORMAN SMITH ARCHITECTURE (NSA) OR BY DIGITAL SCANNING OF PAPER COPIES ARE © NSA UNLESS THE FILES ARE THE INTELLECTUAL PROPERTY OF A NON-NSA ENTITY. THE FILES MAY NOT BE MANIPULATED, REVISED OR MODIFIED IN ANY MANNER WITHOUT THE PRIOR WRITTEN CONSENT OF THE ARCHITECT.
---------	--------------------------	---	--	---------------------------------	--



1 ARCH PLAN-ROOF LEVEL-ROOF STRUCTURE
 A.3.1.1 Scale: 3/16" = 1'-0"



THIS DRAWING IS THE PROPERTY OF NORMAN SMITH ARCHITECTURE. IT IS TO BE USED ONLY FOR THE PROJECT AND SITE SPECIFICALLY IDENTIFIED HEREON. IT IS NOT TO BE REPRODUCED, COPIED, OR TRANSMITTED IN ANY MANNER WITHOUT THE PRIOR WRITTEN CONSENT OF THE ARCHITECT.

THIS DRAWING IS THE PROPERTY OF NORMAN SMITH ARCHITECTURE. IT IS TO BE USED ONLY FOR THE PROJECT AND SITE SPECIFICALLY IDENTIFIED HEREON. IT IS NOT TO BE REPRODUCED, COPIED, OR TRANSMITTED IN ANY MANNER WITHOUT THE PRIOR WRITTEN CONSENT OF THE ARCHITECT.

A.3.1.1

Capital City Real Estate

Multi-Family Residential Project at 2341 Ontario Road, NW

Norman Smith Architecture 1341 H Street, NW, Washington, DC 20002-4406

CCRE REVW+ANC PRESENT:082214

DRAWINGS, DESIGN AND SPECIFICATIONS ARE © 2014 NORMAN SMITH ARCHITECTURE

ELECTRONIC FILE(S) DISCLAIMER: THESE FILES PROVIDED DIRECTLY BY NORMAN SMITH ARCHITECTURE (NSA) OR BY DIGITAL SCANNING OF PAPER COPIES ARE © NSA UNLESS THE FILES ARE THE INTELLECTUAL PROPERTY OF A NON-NSA ENTITY. THE FILES MAY NOT BE MANIPULATED, REVISED OR MODIFIED IN ANY MANNER WITHOUT THE PRIOR WRITTEN CONSENT OF THE ARCHITECT.